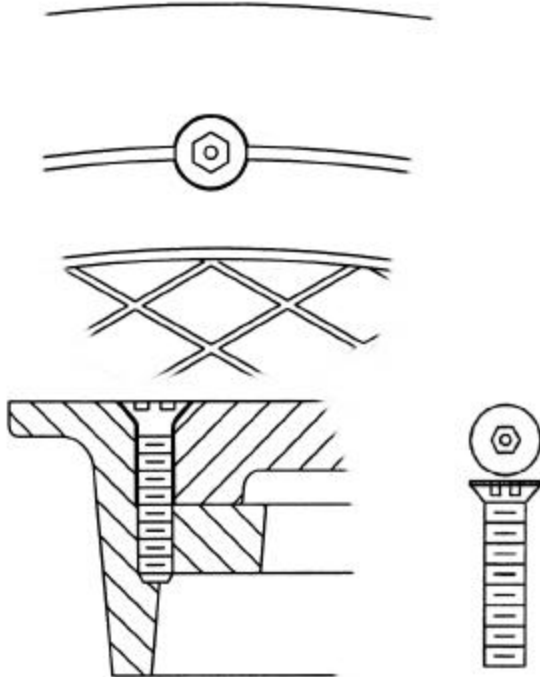


SECURITY BOLTING



Security bolting of street castings is a process which Neenah has been engaged in for many years. We have the ability to bolt our covers and grates to their frames, using a variety of bolting methods.

Neenah commonly furnishes stainless steel hex head bolts or stainless steel flat head slotted screws when bolting is specified. Should your installation require a higher level of security, other fastening options are worthy of consideration, including:




PENT HEAD BOLT
HEX SOCKET W/ PIN*
PENT SOCKET W/ PIN*
INTIMIDATOR (MCGARD, INC.)*
KEYED-LOK (BRYCE FASTENER)*

*Furnished as flathead or buttonhead.

Additionally, Neenah has the ability to provide you with replacement or retrofit bolts should you wish to upgrade security in existing installations.

We encourage you to contact your Neenah representative for further information. Additional Neenah catalogs and literature can be found online at <http://www.nfco.com> or requested from your representative.



Your Specification Partner

NEENAH FOUNDRY CO.
NEENAH WI

Contact us for your
Security Bolting Options

NEENAH
FOUNDRY COMPANY
2121 Brooks Avenue, Neenah WI 54956
Phone: 800-558-5075 Fax: 920-729-3661
<http://www.nfco.com>

Experience - Innovation - Service

CAUTIONS:

Fastening Frames and Covers Together (Fastening Devices): Specifiers and users must recognize that bolts and other fastening devices may have a tendency to work loose over a period of time due to traffic patterns, vibrations, temperature cycles, etc. and that routine inspection and maintenance schedules should be implemented to assure these fasteners remain tight and functional. They must determine the necessity and frequency of these inspection and maintenance intervals for each installation. Procedures should be established to assure that maintenance crews check fastening devices for proper function and torque bolts to your established requirements. Crews must repair or replace fastening devices, stripped bolts, and threads promptly. Consider each installation individually to be sure traffic or usage patterns will allow the use of fastening devices.

NF-1201-1MEPD